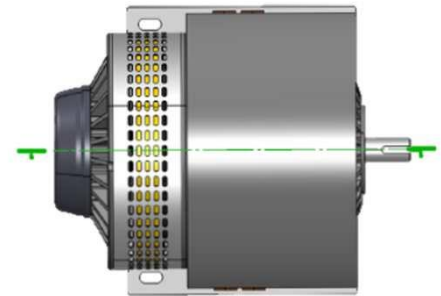


LEM-2X2

Overview:

The LMC-2X2 is a matched pair of axial gap DC brushed motor in a single frame suitable for traction and industrial applications.

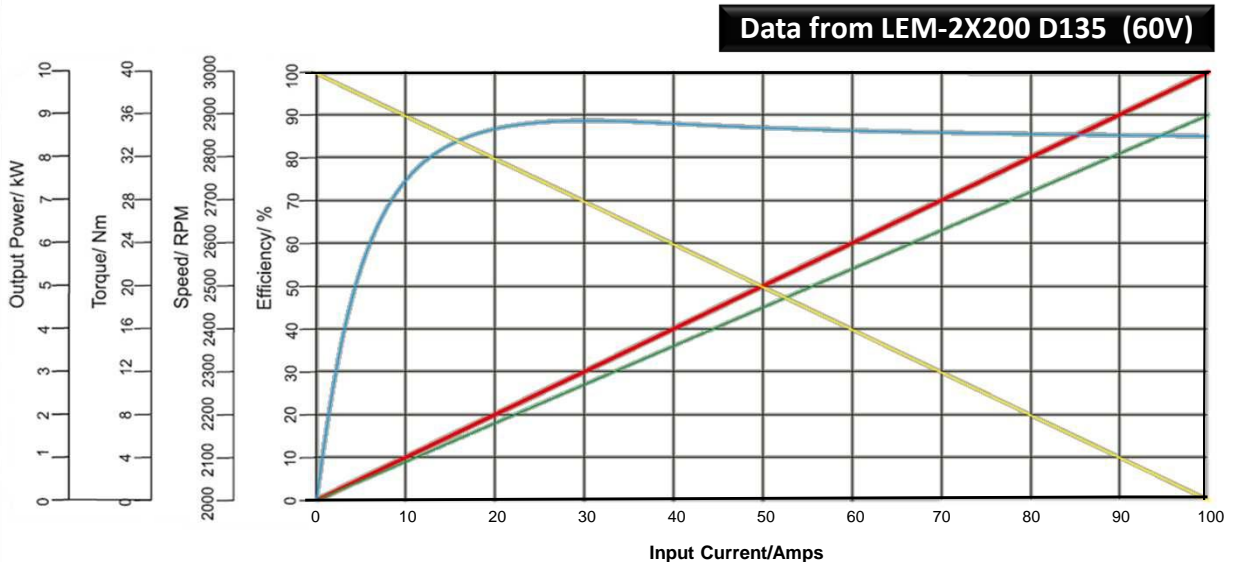
The LMC-2X2 is available in 95, 127 and 135 strip armatures with magnet grade selection dependant on application.



Features:

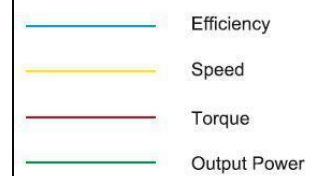
- High efficiency (up to 93%)
- Lightweight design (25kg)
- Simple electronic control
- Long brush Life
- Interchangeable Shaft
- Rugged Construction
- CE Marked
- Ip20 rating
- Available from 24 to 110v
- Speed proportional to voltage

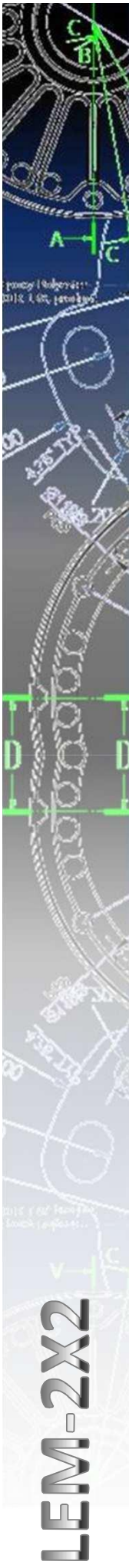
Typical Technical Data Curve :



IMPORTANT:

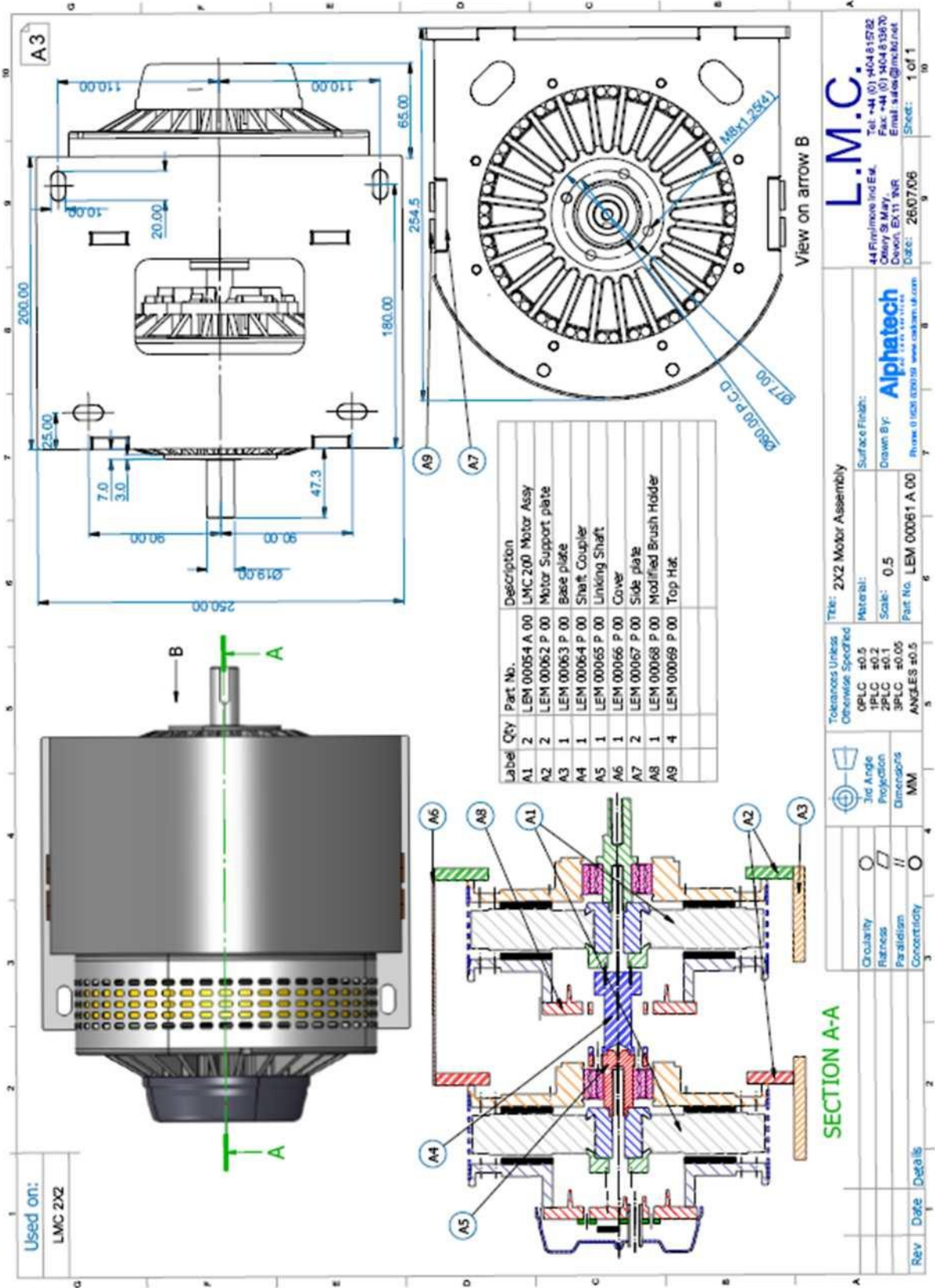
Any model of the LEM-200 can be made up into the **2X2 version**. This is 2 motors married together on a single shaft see 2X2 installation drawing for details on our [website](#). This can also be supplied in a **V-Twin layout** which gives the same performance.





LEM-2X2

Technical Data:



Label	Qty	Part No.	Description
A1	2	LEM 00054 A 00	LMC 200 Motor Assy
A2	2	LEM 00062 P 00	Motor Support plate
A3	1	LEM 00063 P 00	Base plate
A4	1	LEM 00064 P 00	Shaft Coupler
A5	1	LEM 00065 P 00	Linking Shaft
A6	1	LEM 00066 P 00	Cover
A7	2	LEM 00067 P 00	Side plate
A8	1	LEM 00068 P 00	Modified Brush Holder
A9	4	LEM 00069 P 00	Top Hat

Used on:
LMC 2X2

Section A-A

Surface Finish:
1PLC ±0.5
2PLC ±0.2
3PLC ±0.1
ANGLES ±0.5

3rd Angle Projection

Dimensions: MM

Concentricity

Parallism

Fairness

Roundness

Rev **Date** **Details**

Material: **Scale:** 0.5 **Part No.:** LEM 00061 A 00

Tolerances Unless Otherwise Specified

Surface Finish:

Drawn By: Alphatech

Checked By:

Approved By:

DATE: 26/07/06

Sheet: 1 of 1

DATE: 26/07/06

Drawn By: Alphatech

Checked By:

Approved By:

DATE: 26/07/06

Sheet: 1 of 1

DATE: 26/07/06

Sheet: 1 of 1

L.M.C.
44 Fyfeville Ind Est,
Oleary St, Mar,
Devon, EX11 9WR
Email: sales@lmc.co.uk
Tel: +44 (0) 1404 815782
Fax: +44 (0) 1404 815670



TOPS (Agent/Distributor)
23 rue JJ Rousseau, 75001 PARIS (France)
Phone: +33 (0)1 42 51 79 83 - Fax: +33 (0)1 42 51 51 83
www.tops-inll.com

