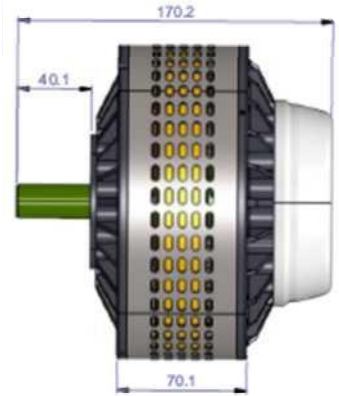


LEM-170

Overview:

The LEM-170 is an axial gap DC brushed motor suitable for traction and industrial applications such as compressors, sweepers, mopeds, golf carts and pumps.

The LEM-170 is available in 126 and 127 strip armatures with magnet grade selection dependant on application.

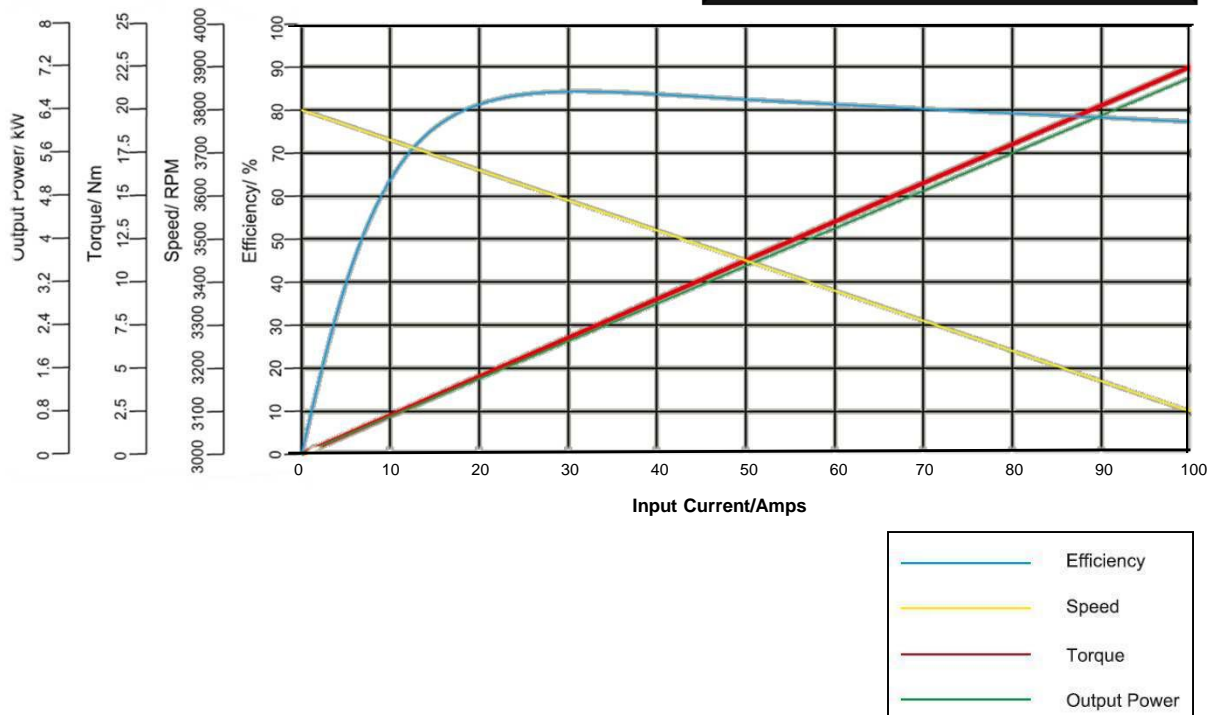


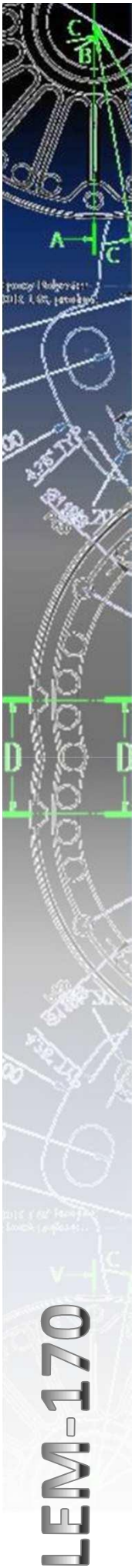
Features:

- High efficiency (up to 90%)
- Lightweight design (8.5kg)
- Simple electronic control
- Long brush Life
- Interchangeable Shaft
- Rugged Construction
- CE Marked
- Ip20 rating
- Available from 12 to 60v
- Speed proportional to voltage

Typical Technical Data Curve :

Data from LEM-170/127 (48V)

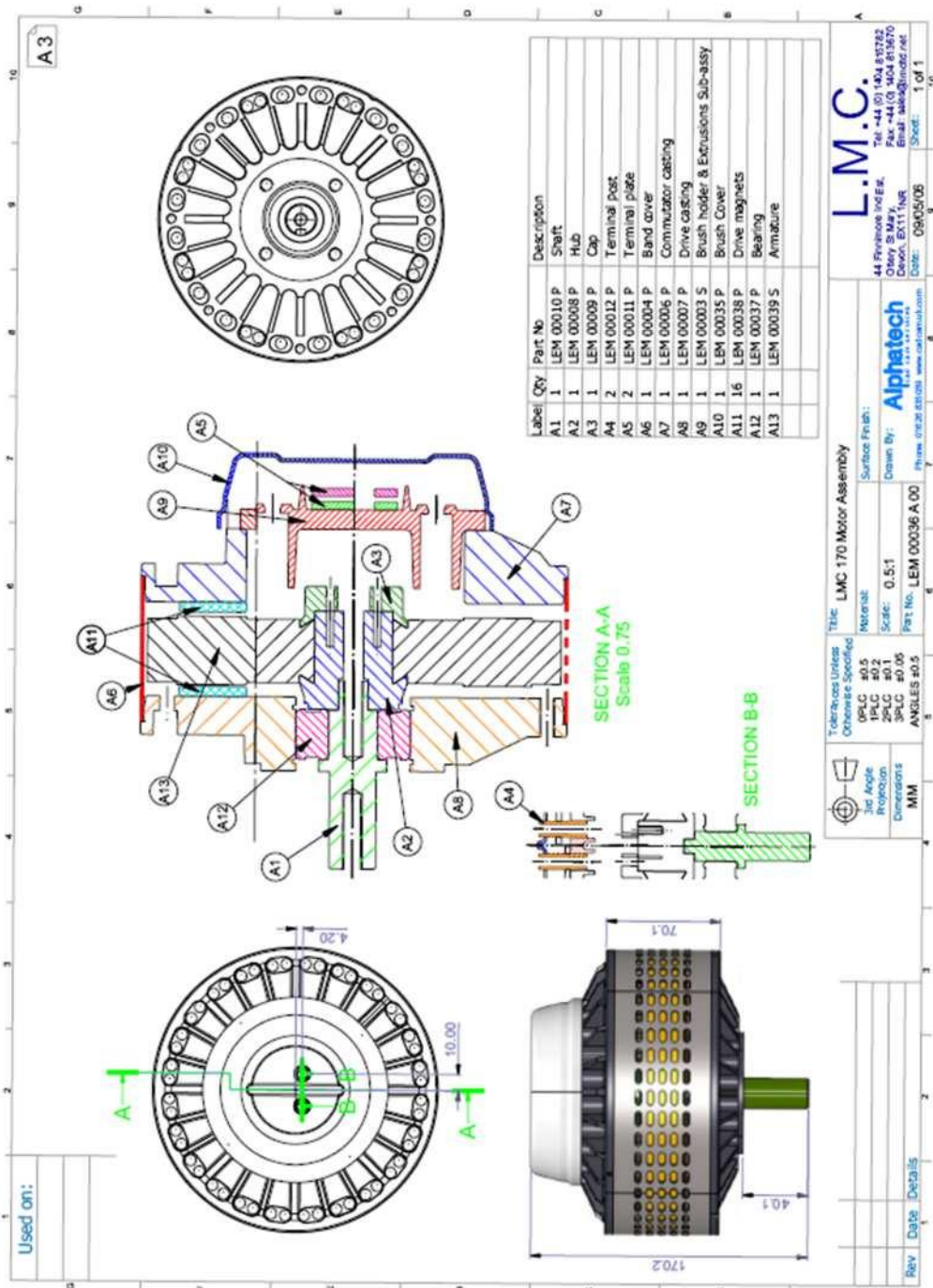




LEM-170

Technical Data:

Motor	No Load Current	Torque Constant	Speed Constant	Armature Resistance DC	Armature Inductance @ 15kHz	Armature Inertia	Peak Power	Peak Efficiency	Peak Current	Rated Power	Rated Speed	Rated Voltage	Rated Current	Rated Torque
	A	Nm/A	Rpm/V	mΩ	μH	Kgm ²	kW	%	A	kW	Rpm	V	A	Nm
126	18	0.055	140	185	8	0.0234	7	76	400	4.30	3360	24	240	12.2
127	5	0.12	68	24	23	0.0236	16	89	400	5.54	3264	48	140	16.2
D127	4	0.134	62	21	15	0.0236	21	90	400	7.10	3720	60	140	18.2



TOPS (Agent/Distributor)
23 rue JJ Rousseau, 75001 PARIS (France)
Phone: +33 (0)1 42 51 79 83 - Fax: +33 (0)1 42 51 51 83
www.tops-intl.com

